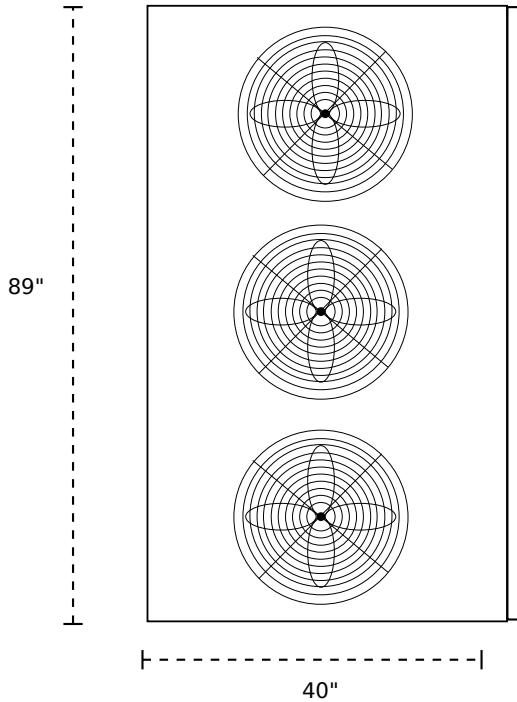




MODEL DU20T29CK696-4

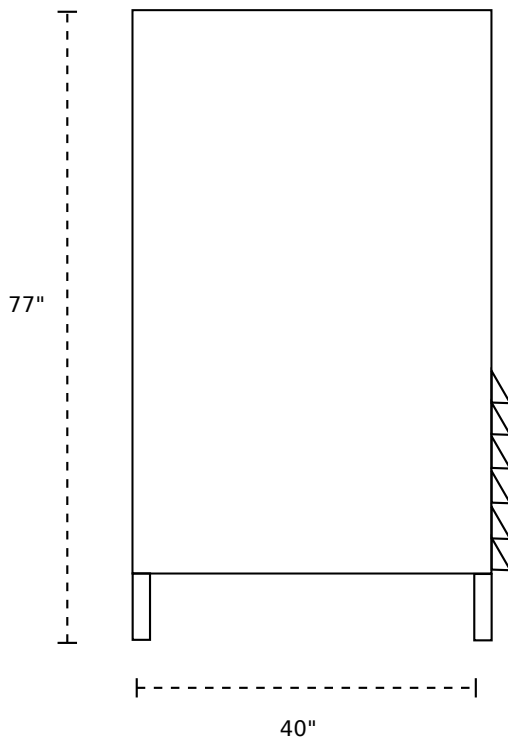
TOP



SPECIFICATIONS:

- 20 ton dehumidifier
- Performance: 27.8 gallons per hour @ 80F and 60% relative humidity
- 29 gallons per hour, 696 gallons per day
- 12.62 pints per KW
- Electrical: 460V, 60hz three phase
- Minimum Circuit Ampacity: 39, Maximum Fuse Size 54 Amps
- R410a Refrigerant
- Two 120,000 BTU/HR Copeland Scroll Compressors
- CFM: 9,000
- Dimensions: 89" wide, 40" long, 77" tall
- Weight (LBS): 1725; w/ skeletal crate 1845; w/ closed crate 2175
- Decibels: 84

SIDE



FRONT

